



**AMERICAN & OHIO LOCOMOTIVE CRANE CO.**

**811 Hopley Avenue  
P.O. Box 511  
Bucyrus, Ohio 44820**

800-993-6446 ~ 419-562-6010 ~ Fax: 419-562-2565 ~ [www.alocrane.com](http://www.alocrane.com)

---

**OEM Product Support Bulletin**

**No. 19**

**DATE:** February 24, 2009 (revision date)

**SUBJECT:** TRACTION GEAR CASE SUPPORT ASSEMBLY

**RATING:**  **DIRECTIVE**  
(Action is required)  **ALERT**  
(Safety Issue)

**INFORMATION**  **PRODUCT IMPROVEMENT**  
(Enhanced Product)

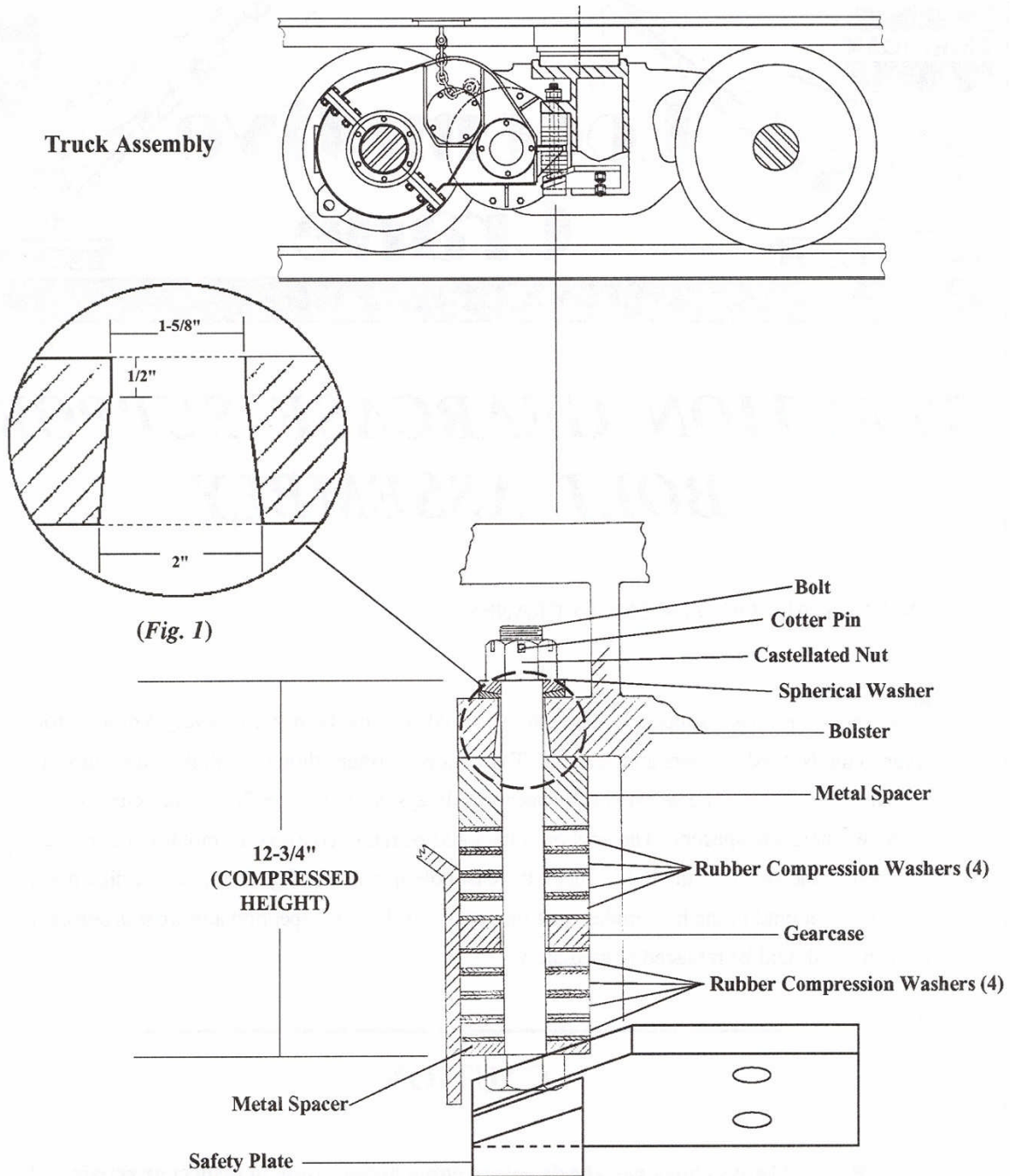
**Machine Model (s):** All Ohio DE Series Locomotive Cranes

**Serial Numbers:** All Ohio DE Series Locomotive Cranes

**Summary:** Failure to maintain to inspect may result in component damage, personal injury and/or death.

**Operational Impact:**

- > Traction Gear Case Support must be inspected every 3 months for wear to the washer and spacers
- > The bonded washers should be slightly compressed with no play between the washer and the spacers.
- > Be sure to verify the stack up sequence of washers and spacers.
- > The Anchor bolt should be removed every 12 months and inspected for wear to the shank.
- > Check the cast hole in bolster (figure 1) for proper dimensions.
- > The bolt must not bind in the hole under traction toque.
- > If wear is detected, parts should be replaced immediately.
- > Always reinstall the cotter pin for the support bolt nut.



Never lay under the Gear Case or Motor while servicing this support!